

APPLICATION SHEET : MECHANISED WELDING

REFERENCE: INF_CO30 / M_POW / 0706 (order 1100006311 – 2C400c1816)

SUBJECT: WELDING OF BUTTERED STAINLESS STEEL TUBE WITH INCONEL TUBE
GTAW/TIG COLD WIRE

APPLICATION: **INCONEL BUTTERING AND WELDING**
CRDM (Control Rod Drive Mechanism) in nuclear power plants

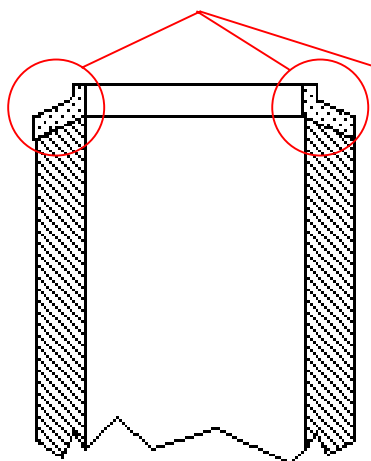
- Diameter (O.D.): 168 mm / 6"
- Thickness: 25.4 mm / 1"
- Welding process: GTAW/TIG cold wire
- Material: Stainless steel 347 - Inconel

EQUIPMENT:

- 600 PC power source with NC-weld controller and POW Windows[®]-based software
- Column & boom
- Positioner
- Modular cross slide assembly for AVC and OSC axis
- GTAW/TIG machine torch
- On-board wire feeder

GENERAL DESCRIPTION AND UNIQUE FEATURES

- Inconel buttering of heavy wall stainless steel pipe ends.
- The use of Inconel filler wire allows the realisation of heterogeneous welds.
- The customer chooses Polysoude because of Polysoude combined expertise in welding application and equipment integration. He also appreciates the very powerful PC power sources with NC-weld controller and POW Windows[®]-based software.



*Inconel buttering of
stainless steel tube ends*

